



L. H. DOTTIE

Hydraulic Punch Kits

Hydraulic Punch Kits

HPTK2 - 16pc. Kit for 1/2" to 4" Conduit



Features & Benefits

- Tool Features Fully Articulating Head - 360° Capability
- Only ONE Tool Required for All Dies to 6"
- Laser Etched Markings on Die Cups for Precise Location
- Die Tool Design Results in Minimal Pressure Requirements
- 2" Punch Set Requires Just 30#s of Force Compared to Competitor's 80#s
- Complete Set of Dies - 1/2" to 4" Conduit
- 3 Cutting Dies - Slugs Cannot Bind - They Just Fall Out
- 2 Tip-Bits™ Step Drills in Storage Compartment
- 1/2" Die Spacer included for Convenience (Not Required)
- Dies Rated for 10 ga. Stainless Steel

- Laser Etched Part Numbers
- Cushioned Handle on Pump
- Laser Etched Marking on Articulating Head for Easy Storage
- 5" and 6" Die Sets Available on Special Order
- Heavy Duty Bullet Proof Carrying Case

Contents

- 1pc. Hydraulic Punch with Fully Articulating Head
- 10pc. Die Sets: Sizes - 7/8", 1-1/8", 1-3/8", 1-3/4", 2", 2-1/2", 3", 3-1/2", 4", 4-1/2"
- 2pc. Draw Studs/Collar: Sizes - 3/8", 3/4"
- 2pc. Tip-Bits™ Steps Drills
- 1pc. 1/2" Die Spacer
- Bullet Proof Carrying Case

2 Tip-Bits™ Step Drills Included in Storage Compartment

HPTK3 - 3pc. Dies Kit for 3", 3-1/2", and 4" Conduit



Features & Benefits

- Laser Etched Markings on Die Cups for Precise Location
- Die Tool Design Results in Minimal Pressure Requirements
- Complete Set of Dies - 3", 3-1/2", and 4" Conduit
- 3 Cutting Dies - Slugs Cannot Bind - They Just Fall Out
- Dies Rated for 10 ga. Stainless Steel

- Laser Etched Part Numbers
- 5" and 6" Die Sets Available on Special Order
- Heavy Duty Bullet Proof Carrying Case

Contents

- 3pc. Die Sets: Sizes - 3-1/2", 4", and 4-1/2"
- Bullet Proof Carrying Case

WARRANTY: One year/defective material or workmanship – repair or replace.
See LH Dottie Catalog 30 for complete Warranty details.

L.H. Dottie Co.
Commerce, CA 90040
lhdottie.com

LPUNCH
©2009 L.H. Dottie Co.

L. H. DOTTIE

Hydraulic Punch Kits

Compact Pump with Fully Articulating Head

Dies Require 50% Less Torque

Laser Etched Dies with 3 Cutting Points

Dies rated for
10ga Stainless Steel

Bullet Proof
Carrying Cases





Hydraulic Punch Kits

Features & Benefits

- Tool Features Fully Articulating Head - 360° Capability
- Only ONE Tool Required for All Dies
- Laser Etched Markings on Die Cups for Precise Location
- Dies Require 50% Less Torque
- 3 Point Die Design - Slugs Cannot Bind - They Just Fall Out
- Cushioned Handle on Pump
- Heavy Duty Bullet Proof Carrying Case
- Full Color Instructions

Laser Etched Marking on Articulating Head for Easy Storage

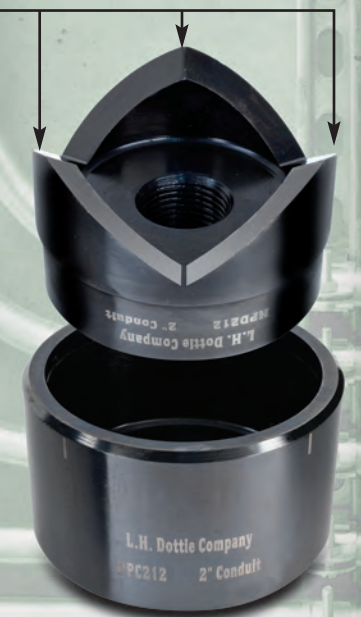
Tool Features Fully Articulating Head - 360° Capability

Laser Etched Markings on Die Cups for Precise Location



Laser Etched Part Numbers And Sizes

L.H. Dottie's unique die sets feature 3 cutting points. With this feature, no slug will ever hang up and no effort is required to split a slug. The slug will simply fall out of the cup!



Cushioned Handle on Pump

Hydraulic Punch Kits

L. H. DOTTIE

Hydraulic Punch Kits



Heavy Duty Bullet Proof Carrying Cases



Full Color Instructions on Box and Inside the Case.

HPTK1 - 13pc. Kit for 1/2" to 2-1/2" Conduit



Features & Benefits

- Tool Features Fully Articulating Head - 360° Capability
- Only ONE Tool Required for All Dies to 6"
- Laser Etched Markings on Die Cups for Precise Location
- Die Tool Design Results in Minimal Pressure Requirements
- 2" Punch Set Requires Just 30#s of Force Compared to Competitor's 80#s
- Complete Set of Dies - 1/2" to 2-1/2" Conduit
- 3 Cutting Dies - Slugs Cannot Bind - They Just Fall Out
- 2 Tip-Bits™ Step Drills in Storage Compartment
- 1/2" Die Spacer included for Convenience (Not Required)
- Dies Rated for 10 ga. Stainless Steel
- Laser Etched Part Numbers

- Cushioned Handle on Pump
- Laser Etched Marking on Articulating Head for Easy Storage
- 5" and 6" Die Sets Available on Special Order
- Heavy Duty Bullet Proof Carrying Case

Contents

- 1pc. Hydraulic Punch with Fully Articulating Head
- 7pc. Die Sets: Sizes - 7/8", 1-1/8", 1-3/8", 1-3/4", 2", 2-1/2", 3"
- 2pc. Draw Studs/Collar: Sizes - 3/8", 3/4"
- 2pc. Tip-Bits™ Steps Drills
- 1pc. 1/2" Die Spacer
- Bullet Proof Carrying Case

2 Tip-Bits™ Step Drills in Storage Compartment